

Download

SiecoSmart is available for both iOS and Android. Search the name "SiecoSmart" in App Store or Google Play.

Download App



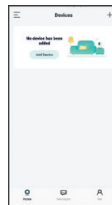
Android



iOS

Add device

Log in the SiecoSmart, select "Add Device", and add the smart camera to the App according to the screen tips (please place the smart camera near the router when setting it up).



NOTE: If you need to re-select the WiFi network, please press and hold the "RESET" button for 5 seconds, the device will restart, and the indicator will be flashing red.

Design and specifications are subject to change without notice. Designed by Siera / Assembled in PRC. Product may vary in appearance and specifications.

Siera and Sieco are trademarks belonging to Siera Holding Group.

Warranty conditions according to www.siecoelectronics.com/warranty

siecoelectronics.com

Functions

Pan/Tilt

Rotate your camera by sliding on your smartphone, providing you with 360 degrees of vision.

Two-way audio

When you see a visitor from the live view of camera, you can call and then communicate with the visitor by your App function.

Color Night Vision

With white light, the images and videos captured by alarm detection are colorful, providing you with a better view.

Sound detection

The camera will detect abnormal sounds, and send you push notifications and app alerts.

Human Filtering Detection

Supports filtering out false alarms caused by mosquitoes, leaves, light changes, etc. Generally, alarms are triggered only when humans are detected, greatly improving the accuracy of motion detection.

Alarm of light and sound

When alarms are activated at night, the camera will distinguish threatening sounds and lights.

Motion detection

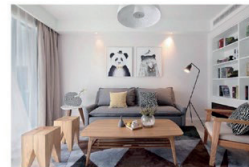
Built-in motion sensors detect movement, and the camera will send you push notifications and app alerts.

Record

Support 24H continuous recording with high capacity SD storage or Cloud storage.

Day & Night

Never miss a moment, even in complete darkness, with powerful night-vision technology.



Day



Night



User Manual
S38PT

FAQ

Q: The device cannot be previewed properly?

A: Check whether the network is normal, you can place the camera close to the router, and if not, it is recommended to reset the device and add it again.

Q: Why is it still in the list of devices after resetting?

A: The reset device only resets the network configuration of the camera, but cannot change the configuration on the App, remove the camera, and must be deleted by the App.

Q: How to cut the camera network to another router?

A: First remove and reset the device on the App and then configure the device again by the App.

Q: Why doesn't the device identify the SD card?

A: It is recommended to plug in SD card after power cut. Confirm whether the SD card is normally available and the format is FAT32. And the TF card can't be identified when the internet environment is not good.

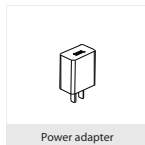
Q: Why I can't get the notifications with my cell phone App?

A: Please confirm that the App has been running on the phone, and the relevant reminder function has been opened; Message notification and authority confirmation in the mobile phone system have been opened.

Please consult this checklist for all parts.



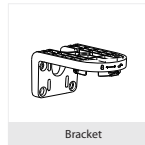
Sieco S38PT



Power adapter



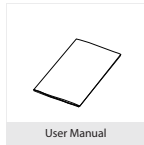
USB cable



Bracket

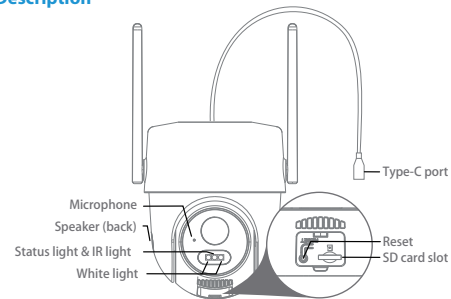


Screws



User Manual

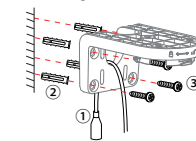
Description



Power port	DC 5V±10% / 1A
Status light	Solid red light on: The camera is turning on or malfunctional Blinking red light: Awaiting WiFi connection (slowly blinking) Connecting Wthe iFi (quickly blinking) Solid blue light on: The camera runs correctly
Microphone	Captures sound for your video
SD card slot	Support local SD Card storage (Max. 512Gb)
Reset	Press and hold for 5 seconds with pin to reset the camera (if you have modified settings, they will return to factory defaults)

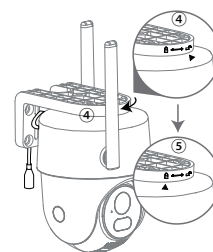
Install

Wall Mounting

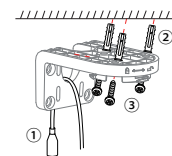


1. Take camera power cable through the bracket.
- 2/3. Install expansion screws and mounting screws.
4. Insert the camera into the bracket and point the camera black arrow at the bracket Unlock logo.

5. Rotate the camera until it snaps into the bracket with the black arrow pointing at the Lock logo.



Ceiling mounting



1. Take camera power cable through the bracket.
- 2/3. Instale tornillos de expansión y tornillos de montaje
4. Insert the camera into the bracket and point the camera black arrow at the bracket Unlock logo.
5. Rotate the camera until it snaps into the bracket with the black arrow pointing at the Lock logo.