

Download

SiecoSmart is available for both iOS and Android. Search the name "SiecoSmart" in App Store or Google Play.

Download App



Android



iOS

Add device

Log in the SiecoSmart, select "Add Device", and add the smart camera to the App according to the screen tips (please place the smart camera near the router when setting it up).



NOTE: If you need to re-select the WiFi network, please press and hold the "RESET" button for 5 seconds, the device will restart, and the indicator will be flashing red.

Design and specifications are subject to change without notice.
Designed by Siera / Assembled in PRC. Product may vary in appearance and specifications.

Siera and Sieco are trademarks belonging to Siera Holding Group.

Warranty conditions according to www.siecoelectronics.com/warranty

siecoelectronics.com

Functions

Pan/Tilt

Rotate your camera by sliding on your smartphone, providing you with 360 degrees of vision.

Video flip

Flip your video stream up or down for maximum flexibility.

Motion detection

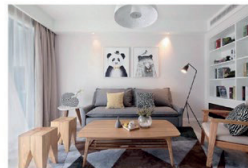
Built-in motion sensors detect movement, and the camera will send you push notifications and app alerts.

Record

Support 24H continuous recording with high capacity SD storage or Cloud storage.

Day & Night

Never miss a moment, even in complete darkness, with powerful night-vision technology.



Day



Night



User Manual

S32

