



How to position your solar panel

Find the area that receives the most direct sunlight throughout the day. Tilt the solar panel upwards at a 30° angle. Point it towards the south if you are in the northern hemisphere and towards the north if you are in the southern hemisphere. This will help maximize solar energy capture and optimize the panel's performance.

IMPORTANT

Wipe the face of the solar panel with a soft, damp cloth regularly to clear any dust or debris. Be sure to update the firmware version of the camera to the latest version.

BASIC PARAMETERS

Cable length: 3m · Operating voltage: 5V DC · Operating temperature: -20.5OC to 48.5OC (-5OF to 120OF)

FCC WARNING

Any changes or modifications not expressly approved by the party responsible for compliance could void the user's authority to operate the equipment.

This device complies with part 15 of the FCC Rules. Operation is subject to the following two conditions:

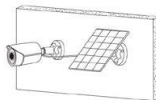
(1) This device may not cause harmful interference, and (2) this device must accept any interference received, including interference that may cause undesired operation.

ISED RSS WARNING

This device complies with ISED licence-exempt RSS standard(s).

Operation is subject to the following two conditions:

(1) This device may not cause interference, and (2) this device must accept any interference, including interference that may cause undesired operation of the device.



Installation complete

siecoelectronics.com

Design and specifications are subject to change without notice.

Designed by Siera / Assembled in PRC. Product may vary in appearance and specifications.

Siera and Sieco are trademarks belonging to Siera Holding Group.

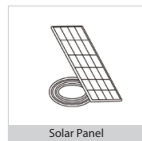
Warranty conditions according to www.siecoelectronics.com/warranty



User Manual

S50

Please consult this checklist for all parts.



Solar Panel



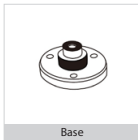
Universal Joint



Circular Socket Nut



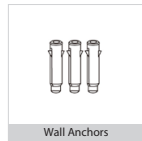
Locking Screw Cap



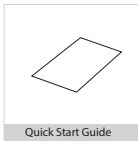
Base



Screws



Wall Anchors



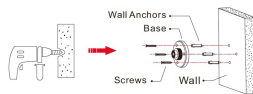
Quick Start Guide

Installation

Place Solar Panel in an area with consistent sunlight throughout the year. It only needs a few hours of direct sunlight each day to keep your camera powered. The amount of energy that the solar panel produces is affected by weather conditions, seasonal changes, geographic location, etc.

Step 1:

Fix the base to your mounting location using the included screws. If the installation surface is soft or unstable, first use a $\phi 6.0$ drill bit to drill a hole in the wall, then insert the anchor nail into the hole and fix the base with screws.



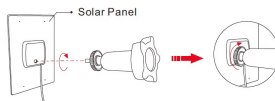
Step 2:

First, install the locking screw cap into the universal joint and then screw the circular socket nut into the universal joint.



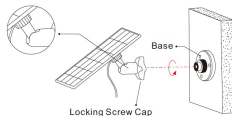
Paso 3:

Screw the universal joint into the back of the solar panel. Tighten it firmly with the attached nut.



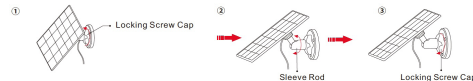
Paso 4:

Screw the locking screw cap into the base. Make sure that the universal joint is angled upward.



Step 5:

When adjusting the solar panel left or right, loosen the locking screw cap, turn the sleeve rod, and tighten the locking screw cap when the panel is in position.



Paso 6:

Solar panels angle can be adjusted up and down up to 90°.

Tip: After the installation is complete, please check that all locking mechanisms are tightly secured.

