

## Download

SiecoSmart is available for both iOS and Android. Search the name "SiecoSmart" in App Store or Google Play.

## Download App



Android

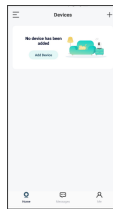


iOS

## Add device

Log in the SiecoSmart, select "Add Device", and add the smart camera to the App according to the screen tips (please place the smart camera near the router when setting it up).

NOTE: If you need to re-select the WiFi network, please press and hold the "RESET" button for 5 seconds, the device will re-start, and the indicator will be flashing red.



Design and specifications are subject to change without notice.  
Designed by Siera / Assembled in PRC. Product may vary in appearance and specifications.  
Siera and Sieco are trademarks belonging to Siera Holding Group.

Warranty conditions according to [www.siecoelectronics.com/warranty](http://www.siecoelectronics.com/warranty)

## Functions

### Remote wake-up

The camera will be in a sleep mode to save power; you can have a preview in App.

### Full-duplex audio

You can see and hear the visitor in your App from the camera.

### PIR

When the camera detects someone stopping by, it sends an alarm message to your cell phone.

### Low battery alarm

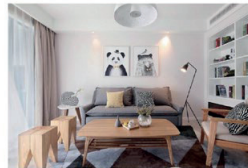
When the battery power is lower than your set, the App will send a notification to your mobile phone.

### Record

Using SD card or opening the Cloud-Storage Service, to keep recording for every moment.

### Day & Night

Powerful night vision means no interruptions, even in complete darkness.



Day



Night

[www.siecoelectronics.com](http://www.siecoelectronics.com)



## FAQ

Q: The device cannot be previewed properly?

A: Check whether the network is normal, you can place the camera close to the router, and if not, it is recommended to reset the device and add it again.

Q: Why is it still in the list of devices after resetting?

A: The reset device only resets the network configuration of the camera, but cannot change the configuration on the App, remove the camera, and must be deleted by the App.

Q: How to cut the camera network to another router?

A: First remove and reset the device on the App and then configure the device again by the App.

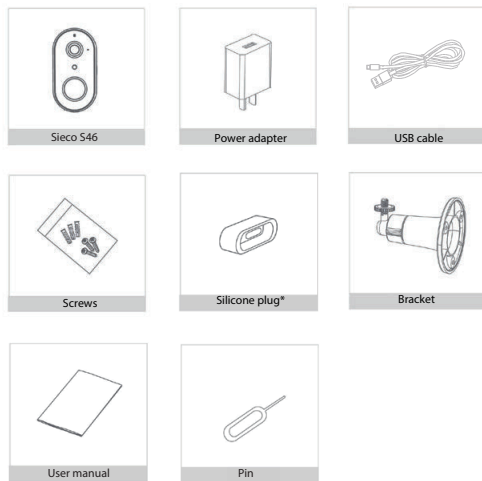
Q: Why doesn't the device identify the SD card?

A: It is recommended to plug in SD card after power cut. Confirm whether the SD card is normally available and the format is FAT32. And the TF card can't be identified when the internet environment is not good.

Q: Why I can't get the notifications with my cell phone App?

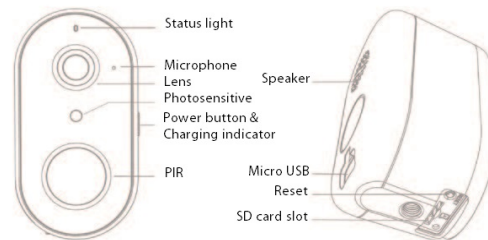
A: Please confirm that the App has been running on the phone, and the relevant reminder function has been opened; Message notification and authority confirmation in the mobile phone system have been opened.

## Please consult this checklist for all parts.



\* Silicone plug is used for the installation of solar panel to prevent water leakage.

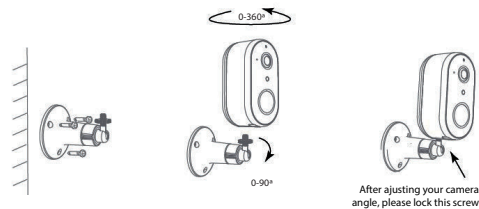
## Description



Power port	DC 5V±10%
Power On/Off	Press the button for 3 seconds to turn on/off the camera
Status light	Solid red light on: The camera is turning on or malfunctional Blinking red light: Awaiting WiFi connection (slowly blinking) Connecting the WiFi (quickly blinking) Blinking blue light: Currently connecting Solid blue light on: The camera runs correctly
SD card slot	Support local SD Card storage (Max. 512Gb)
Reset	Press and hold for 5 seconds with pin to reset the camera
Charging indicator	Solid red indicator on: Battery is charging Solid blue indicator on: Charging completed
Battery capacity	6700mAh (two 18600 lithium-ion batteries)

## Install

### Mode 1: Bracket Installation



1. Fix the bracket on the wall
2. Install the camera in the bracket and lock it with the screw