

Download

SiecoSmart is available for both iOS and Android. Search the name "SiecoSmart" in App Store or Google Play.

Download App



Android



iOS

Add device

Log in the SiecoSmart, select "Add Device", and add the smart camera to the App according to the screen tips (please place the smart camera near the router when setting it up).



NOTE: If you need to re-select the WiFi network, please press and hold the "RESET" button for 5 seconds, the device will re-start, and the indicator will be flashing red.

Design and specifications are subject to change without notice.
Designed by Siera / Assembled in PRC. Product may vary in appearance
and specifications.

Siera and Sieco are trademarks belonging to Siera Holding Group.

Warranty conditions according to www.siecoelectronics.com/warranty

Functions

Full-duplex audio

When the visitor push the doorbell button, you will get a call. You can see and hear the visitor in your App from the doorbell if you answer.

Motion detection

Motion sensors will notify you when movement is detected.

Shared device

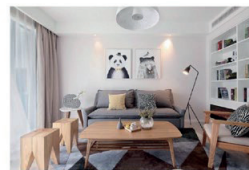
The doorbell device can be shared with friends, and friends can also preview online. There is no limit to the number of sharing devices, but only 6 accounts are supported for online preview at the same time.

Record

Record every moment by using high capacity SD card storage.

Day & Night

Powerful night vision means no interruptions, even in complete darkness.



Day



Night



User Manual
S42

FAQ

Q: The device cannot be previewed properly?

A: Check whether the network is normal, you can place the camera close to the router, and if not, it is recommended to reset the device and add it again.

Q: Why is it still in the list of devices after resetting?

A: The reset device only resets the network configuration of the camera, but cannot change the configuration on the App, remove the camera, and must be deleted by the App.

Q: How to cut the camera network to another router?

A: First remove and reset the device on the App and then configure the device again by the App.

Q: Why doesn't the device identify the SD card?

A: It is recommended to plug in SD card after power cut. Confirm whether the SD card is normally available and the format is FAT32. And the TF card can't be identified when the internet environment is not good.

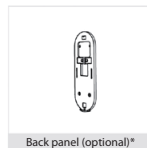
Q: Why I can't get the notifications with my cell phone App?

A: Please confirm that the App has been running on the phone, and the relevant reminder function has been opened; Message notification and authority confirmation in the mobile phone system have been opened.

Please consult this checklist for all parts.



Sieco S42



Back panel (optional)*



Screws



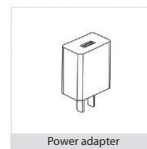
Screwdriver



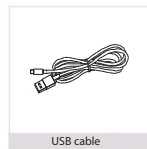
Pin



User Manual



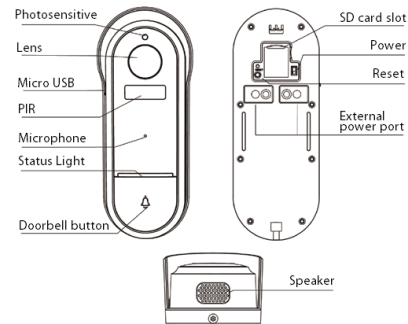
Power adapter



USB cable

* The back panel without waterproof is optional.

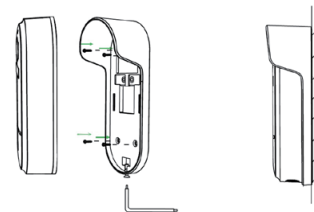
Description



| | |
|-----------------|---|
| Power port | DC 5V/1A (USB); AC 12V-24V (AC supply) |
| Doorbell button | Press the button to activate the doorbell |
| Status light | Blinking red light: Wait for network connection (slow) connecting the network (fast) Solid blue light on: Camera is working correctly Solid red light on: Camera is malfunctional |
| Microphone | Capture sound for your video |
| SD card slot | Support local SD Card storage (Max. 512Gb) |
| Reset | Press and hold on for 5 seconds with pin to reset |

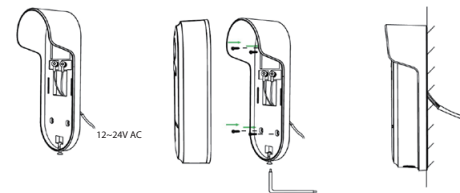
Installation

Mode 1: Battery supply



1. Fix the bracket to the wall with the mounting screws
2. Install the camera in the bracket and lock it with the screw

Mode 2: AC supply (optional)



1. Prepare the accessories which are needed in AC supply.
2. Connect the bracket with the AC supply.
3. Install the camera in the bracket and lock it with the screw