



Download

SiecoSmart is available for both iOS and Android. Search the name "SiecoSmart" in App Store or Google Play.

Download App



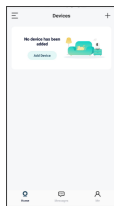
Android



iOS

Add device

Log in the SiecoSmart, select "Add Device", and add the smart camera to the App according to the screen tips (please place the smart camera near the router when setting it up).



NOTE: If you need to re-select the WiFi network, please press and hold the "RESET" button for 5 seconds, the device will res-tart, and the indicator will be flashing red.

Design and specifications are subject to change without notice. Designed by Siera / Assembled in PRC. Product may vary in appearance and specifications.

Siera and Sieco are trademarks belonging to Siera Holding Group.

Warranty conditions according to www.siecoelectronics.com/warranty



Functions

Inverted video

Flip the video stream up or down for maximum flexibility.

Motion detection

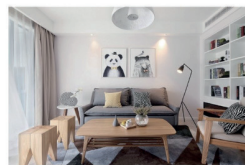
Built-in motion sensors detect movement, and the camera will send push notifications and alerts via the app.

Recording

Support 24-hour continuous recording with high-capacity storage on SD card or cloud storage.

Day & Night

Never miss a moment, even in total darkness, with powerful night vision technology.



Day



Night



User Manual

S30

FAQ

Q: The device cannot be previewed properly?
 A: Check whether the network is normal, you can place the camera close to the router, and if not, it is recommended to reset the device and add it again.

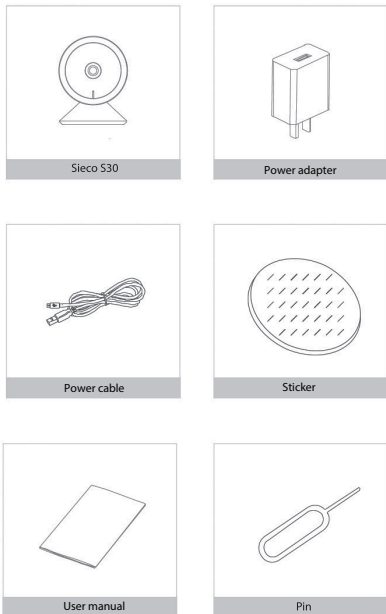
Q: Why is it still in the list of devices after resetting?
 A: The reset device only resets the network configuration of the camera, but cannot change the configuration on the App, remove the camera, and must be deleted by the App.

Q: How to cut the camera network to another router?
 A: First remove and reset the device on the App and then configure the device again by the App.

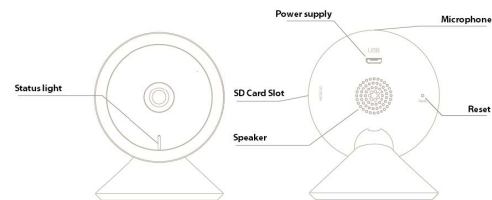
Q: Why doesn't the device identify the SD card?
 A: It is recommended to plug in SD card after power cut. Confirm whether the SD card is normally available and the format is FAT32. And the TF card can't be identified when the internet environment is not good.

Q: Why I can't get the notifications with my cell phone App?
 A: Please confirm that the App has been running on the phone, and the relevant reminder function has been opened; Message notification and authority confirmation in the mobile phone system have been opened.

Please consult this checklist for all parts.



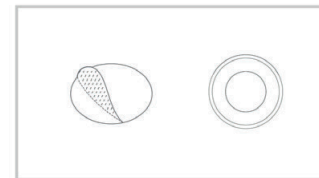
Description



Power supply	DC5V±10%
Status light	Red light steady on (3-5s): Network is not working properly Red light flashing slowly: Wait for network connection Light blinking quickly: Connecting to the network Steady blue light on: Camera working properly
Microphone	Capture sound for your video
SD Card Slot	Support for local SD card storage (maximum 512 GB)
Reset	Press and hold for 5 seconds with a pin to reset the camera (if you have modified the settings, they will return to factory settings)

Installation

Stick the tape to the middle of the bottom of the camera



Place the camera on a horizontal plane

